



GMT MONTHLY MEMBERSHIP PROGRESS REPORT

Results as of: 5/31/2020

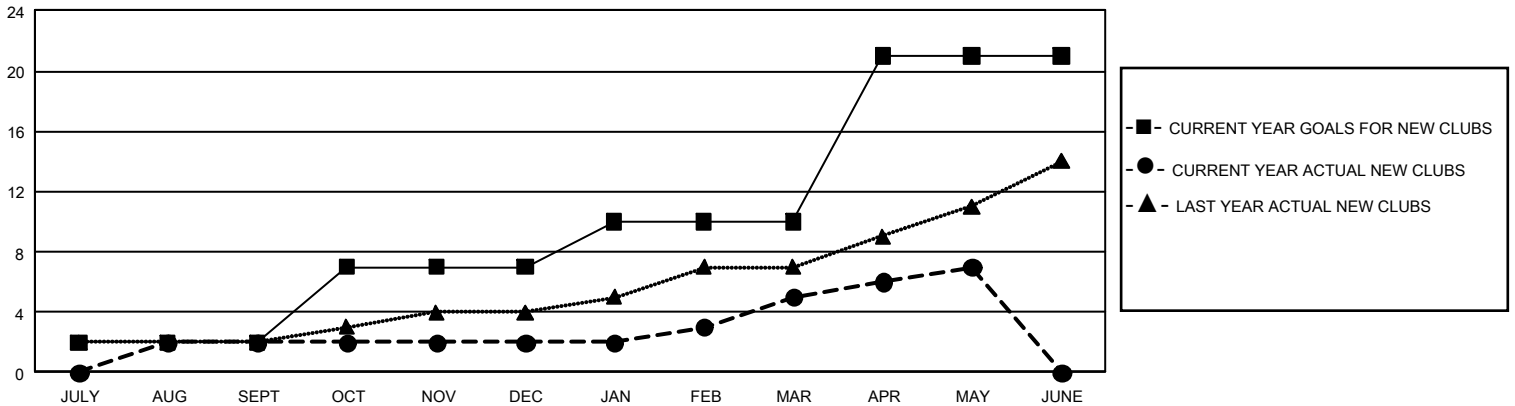
GMT Constitutional Area 4, Group B

GMT: OPEN

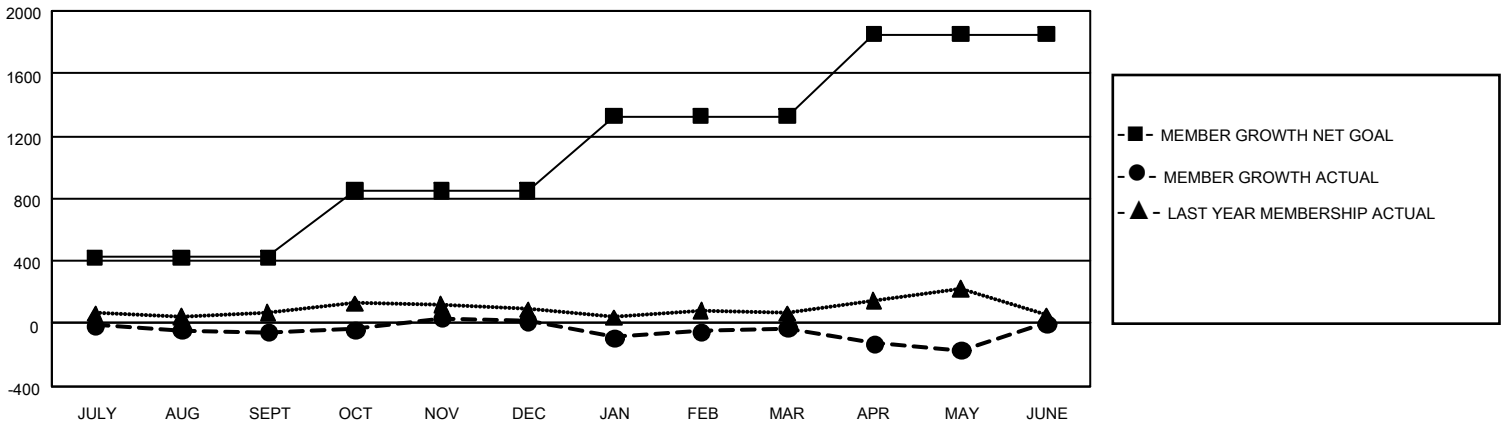
REPORT DOES NOT INCLUDE CLUBS IN UNDISTRICTED AREAS.

Clubs				Members			
RESULTS FOR 2019-2020				RESULTS FOR 2019-2020			
QUARTER	NEW CLUB GOAL	NEW CLUBS	DROPPED CLUBS	QUARTER	MEMBER GROWTH NET GOAL	MEMBER GROWTH ACTUAL	DROPPED MEMBERS ACTUAL (including transfers)
JULY/AUG/SEPT	6	2	1	JULY/AUG/SEPT	1,272	733	723
OCT/NOV/DEC	15	0	1	OCT/NOV/DEC	1,284	654	535
JAN/FEB/MAR	9	3	1	JAN/FEB/MAR	1,425	854	826
APR/MAY/JUNE	33	2	0	APR/MAY/JUNE	1,575	357	465

GOALS AND ACTUAL NEW CLUBS CUMULATIVE



GOALS AND ACTUAL MEMBERS CUMULATIVE



DROPPED CLUBS: 3	1,209 CLUBS OF 2,111 ADDED 1 OR MORE NEW MEMBERS	<u>GENDER DISTRIBUTION</u> MALE 60,656 (84.67%) FEMALE 10,983 (15.33%)
<u>DROPPED MEMBERS</u> DECEASED 661 CLUB CANCELLED 46 OTHER 1,840 <hr/> TOTAL 2,547	CLICK HERE FOR CUMULATIVE MEMBERSHIP DATA	TOTAL FAMILY UNIT MEMBERS 835 FAMILY MEMBERS PAYING HALF DUES 396